



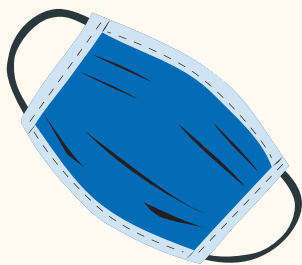
GATHERING SAFELY

If you have a fever, are sneezing/coughing, or have been in contact with someone who was COVID positive in the previous two weeks, we ask that you NOT attend the service

WHERE WILL WE MEET?

In order to allow for appropriate physical distancing (we need to keep at least 6 feet from anyone outside of our household at all times), and to avoid recirculated air/meeting indoors, which can help facilitate the spread of coronavirus, prepare for prayers in the yard! We will plan on meeting in the church graveyard, assuming the group RSVPing doesn't get too large. *Please note that no one will be permitted to enter the building.* Let me know if you have mobility issues that would make setting a chair up in the graveyard difficult for you, and we'll work to find an option that will allow you to participate while following necessary safety guidelines.

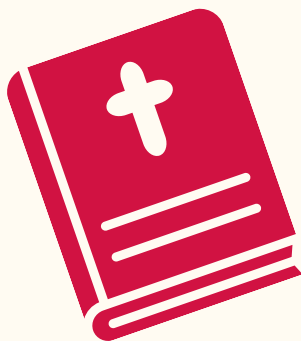
WHAT DO I NEED TO BRING?



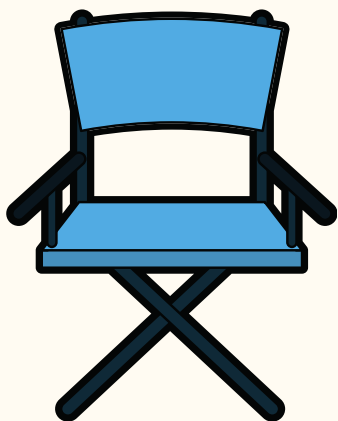
1) **A Mask**—Everyone will need to wear a mask (which needs to cover both your nose and your mouth) at all times. Your mask can be homemade. If you forget your mask, there will be some available in ziplock baggies during the service. Just sanitize your hands at the pump provided and carefully take just one bag.

Please be safe—sanitize your hands after touching your mask and make sure to launder your mask in hot water after wearing it, or dispose of it properly if it is disposable.

2) **A Book of Common Prayer**—If you do not have a BCP, please let Megan know and you will be able to borrow one from the church. There will also be BCPs available if you forget yours. Just sanitize your hands at the pump provided and carefully take just one BCP



3) **A chair or blanket to sit on**



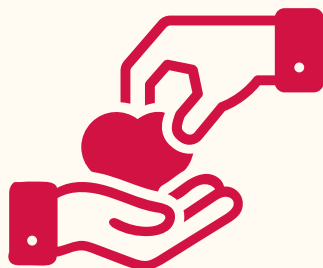
We'd also encourage you to bring:

- 1) A personal container of hand sanitizer
- 2) Water—*please keep in mind that because drinking requires you to remove your mask, you must be in your car in order to drink water*
- 3) Sunscreen and/or parasol

HOW DO I GIVE?

You will be able to continue to give online or by mailing your contributions. Learn more at

saintthomasepiscopal.org/give



There will also be a designated container during worship to drop off your contributions. Just sanitize your hands after depositing your gift.

WHAT ELSE DO I NEED TO KNOW?



In order to ensure we are following the appropriate protocols when we gather, we will not be holding fellowship/coffee hour at this time, which unfortunately means we will not have much opportunity to socialize with one another when we gather. We will gather

for worship while wearing masks and keeping at least 6 feet distance from non-household members, and then depart when the service is over. Please know that this is temporary and necessary to keep everyone as healthy and safe as possible.

THANK YOU FOR YOUR DEDICATION AND PATIENCE AS WE SEEK TO WORSHIP GOD TOGETHER AS SAFELY AS POSSIBLE DURING THIS TIME.